



English Language

In PYP 5, pupils should be developing their understanding and enjoyment of stories, poetry, plays and non-fiction, and learning to read silently. They should also be developing their knowledge and skills in reading non-fiction about a wide range of subjects. They should be learning to justify their views about what they have read: with support at the start of PYP 5 and increasingly independently by the end of PYP 6. Pupils should be able to write down their ideas with a reasonable degree of accuracy and with good sentence punctuation. Teachers should therefore be consolidating pupils' writing skills, their vocabulary, their grasp of sentence structure and their knowledge of linguistic terminology.

READING

- Use knowledge to read 'exception' words
- Read range of fiction and non-fiction
- Use dictionaries to check meaning
- Prepare poems and plays to perform
- Check own understanding of reading
- Draw inferences and make predictions
- Retrieve and record information from non-fiction books
- Discuss reading with others

WRITING

- Use dictionary to confirm spellings
- Write simple dictated sentences
- Use handwriting joins appropriately
- Plan to write based on familiar forms
- Rehearse sentences orally for writing
- Use varied rich vocabulary
- Create simple settings and plot
- Assess effectiveness of own and others' writing

GRAMMAR

- Use a range of conjunctions
- Use perfect tense
- Use a range of nouns and pronouns
- Use time connectives
- Introduce speech punctuation
- Know language of clauses
- Give structured descriptions
- Use prefixes and suffixes in spelling

SPEAKING & LISTENING

- Use relevant strategies to build vocabulary
- Maintain attention and participate actively in collaborative conversations,
- Participate in discussions, presentations, performances, role play and debates
- Participate actively in conversations
- Consider and evaluate different viewpoints

Units of Inquiry

The IB Primary Years Program is a guided inquiry approach to learning and teaching. Inquiry-based units of study, known as Units of Inquiry, are the focus for learning and are integrated into various curriculum areas. Students experience what it is like to think and act like a historian, scientist, engineer or a mathematician. All of the Science and Social studies content is taught through the units of inquiry and is outlined below.

WHO WE ARE

Our choices impact others in positive and negative ways.

LINES OF INQUIRY

- Healthy lifestyle
- Body systems
- How lifestyles have changed through time

HOW WE EXPRESS OURSELVES

Aspects of society can be represented through the Arts.

LINES OF INQUIRY

- Influential individuals within the arts
- The Arts in historical time periods
- Using art to represent an idea

HOW THE WORLD WORKS

Forces act upon nature in different ways.

LINES OF INQUIRY

- Different forces
- The causes and effects of different forces
- The application of forces in our daily lives

WHERE WE ARE IN PLACE AND TIME

Explorers inquire and discover, changing the world in different ways.

LINES OF INQUIRY

- Why explorers explore
- What explorers have changed
- The different points of view

HOW WE ORGANIZE OURSELVES

Studying economics may influence decisions.

LINES OF INQUIRY

- Economic activities.
- Consumerism (making informed decisions)
- Budgeting

SHARING THE PLANET

Environmental changes can pose dangers to living things.

LINES OF INQUIRY

- Classification of living things
- Food chains
- Environmental changes

Mathematics

NUMBER/CALCULATION

- Learn 3, 4 & 8x tables
- Secure place value to 1000
- Mentally add & subtract units, tens or hundreds to numbers of up to 3 digits
- Written column addition & subtraction
- Solve number problems, including multiplication & simple division and missing number problems
- Use commutativity to help calculations

GEOMETRY/MEASURES

- Measure & calculate with metric measures
- Measure simple perimeter
- Add/subtract using money in context
- Use Roman numerals up to XII;
- Tell the time
- Calculate using simple time problems
- Draw 2-d / Make 3-d shapes
- Identify and use right angles
- Identify horizontal, vertical, perpendicular and parallel lines

DATA

- Interpret bar charts & pictograms

COMPARE & SIMPLIFY FRACTIONS

- Use & count in tenths
- Recognise, find & write fractions
- Recognise some equivalent fractions
- Add/subtract fractions up to <1
- Order fractions with common denominator

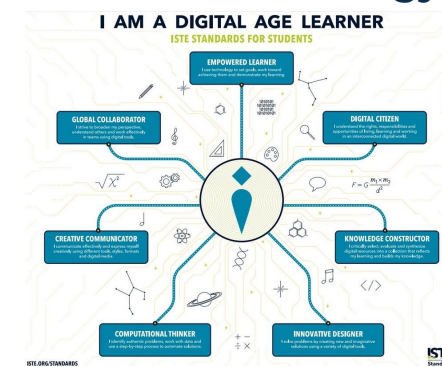
Portuguese

- Constrói imagens mentais à medida que lê e descreve-as quando solicitado.
- Escreve textos demonstrando ter compreendido o princípio geral que rege o sistema de escrita, mesmo que apresente erros ortográficos.
- Faz perguntas sobre o texto, apresentando dúvidas de compreensão ao professor.
- Reconhece os textos não verbais como forma de expressão e interação com outros códigos e linguagem.
- Reconhece a pontuação como fator importante para a construção do sentido do texto.

Personal & Social Education

Learners understand that a person's identity is shaped by a range of factors and that this identity evolves over time. They explore and reflect on the strategies they use to manage change, approach new challenges and overcome adversity. They analyse how they are connected to the wider community and are open to learning about others. Learners use their understanding of their own emotions to interact positively with others. They are aware that developing self-reliance and persisting with tasks independently will support their efforts to be more autonomous learners.

Educational Technology



Mrs. Shirley Hazell - College Principal
office@stfrancis.com.br

Mrs. Carolina Giannetto - Head of Early Years & Primary

Mrs. Vanessa Schachter - Assistant Head of Primary

All of Early Years & Primary - primary@stfrancis.com.br



ST. FRANCIS COLLEGE



St. Francis College
R. Joaquim Antunes, 678 - Pinheiros
CEP: 05415-001 São Paulo - SP - Brasil
Phone: +55 11 3728-8050