

English Language

In PYP 7, pupils will continue to develop their understanding and enjoyment of a wide range of fiction, poetry, plays, nonfiction and reference books and recognize the importance of reading for a range of purposes. They should be able to discuss viewpoints (both of authors and of fictional characters), within a text and across more than one text with support at the beginning of PYP 7 and increasingly independently by the end of the year. Pupils will continue to apply what they have already learnt to produce more complex writing. Pupils will consolidate their writing skills, vocabulary, grasp of sentence structure and their knowledge of linguistic terminology. They should be able to select appropriate grammar, vocabulary, and understand how such choices can change and enhance meaning. They will begin to identify the audience for and purpose of writing, selecting appropriate vocabulary and grammar.

READING

- Read & discuss a broad range of genres & texts
- Identify & discuss themes
- Make recommendations to others
- Learn poetry by heart
- Draw inference & make predictions
- Discuss authors' use of language
- Retrieve & present information from non-fiction texts
- Formal presentations & debates
- Apply knowledge of form and origins when reading new words

WRITING

- Secure spelling, including homophones, prefixes, silent letters, etc.
- Use a thesaurus
- Legible, fluent handwriting
- Plan writing to suit audience & purpose
- Develop character, setting and atmosphere in narrative
- Use organisational & presentational features
- Use consistent appropriate tense
- Proof-reading
- Perform own compositions

GRAMMAR

- Use expanded noun phrases
- Use modal & passive verbs
- Use relative clauses
- Use commas for clauses
- Use brackets, dashes & commas for parenthesis

SPEAKING & LISTENING

- Give well-structured explanations
- Command of standard English
- Consider & evaluate different viewpoints
- Use appropriate register

Units of Inquiry

The IB Primary Years Program is a guided inquiry approach to learning and teaching. Inquiry-based units of study, known as Units of Inquiry, are the focus for learning and are integrated into various curriculum areas. Students experience what it is like to think and act like a historian, scientist, engineer or a mathematician. All of the Science and Social studies content is taught through the units of inquiry and is outlined below.

HOW WE ORGANIZE OURSELVES

Human activity and development can have positive and negative effects on the environment

LINES OF INQUIRY

- Biomes around the world and their compositions
- Interdependence of living things within biomes
- Human impact on biodiversity

WHO WE ARE

Understanding body systems can influence lifestyle choices.

LINES OF INQUIRY

- Human anatomy and body system
- Animal and plant nutrition
- Healthy and unhealthy choices

HOW WE EXPRESS OURSELVES

Mass media impacts and influences societies.

LINES OF INQUIRY

- Mass media and advertising through time
- The influence of media on people and societies
- Stereotypes and personal identity

HOW THE WORLD WORKS

Civilisations are formed through shared beliefs and values.

LINES OF INQUIRY

- Traits of civilisations
- Significance of geography on societies
- Legacy of ancient civilisations

WHERE WE ARE IN PLACE AND TIME

People migrate to meet a variety of different needs.

LINES OF INQUIRY

- History of migration
- Reasons for migration
- Effects of migration
- Types of migration

SHARING THE PLANET

People create materials to understand the world around them.

LINES OF INQUIRY

- Using the scientific method to explain a phenomenon
- Chemical and physical changes of materials
- Human uses for materials

Mathematics

NUMBER/CALCULATION

- Secure place value to 1,000,000
- Use negative whole numbers in context
- Use Roman numerals to 1000 (M)
- Use standard written methods for all four operations
- Confidently add & subtract mentally
- Use vocabulary of prime, factor & multiple
- Multiply & divide by powers of ten
- Use square and cube numbers

GEOMETRY/MEASURES

- Convert between different units
- Calculate perimeter of composite shapes & area of rectangles
- Estimate volume & capacity
- Identify 3-D shapes
- Measure & identify angles
- Understand regular polygons
- Reflect & translate shapes

DATA

- Interpret tables & line graphs
- Solve questions about line graphs

COMPARE & SIMPLIFY FRACTIONS

- Compare & order fractions
- Add & subtract fractions with common denominators, with mixed numbers
- Multiply fractions by units
- Write decimals as fractions
- Order & round decimal numbers
- Link percentages to fractions & decimals

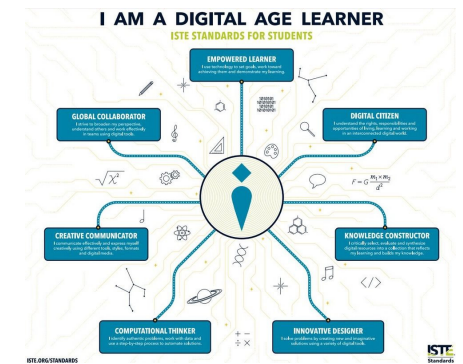
Portuguese

- Expressa o que aprendeu a partir do texto apresentado pelos colegas.
- Emprega os elementos que caracterizam os gêneros textuais na produção de textos próprios.
- Emprega recursos de coesão para evitar repetição excessiva de palavras no texto (pronomes, expressões sinônimas etc.).
- Identifica evidências (argumentos, justificativas) utilizadas pelo autor para defender posições.
- Lê e interpreta textos expositivos e descritivos.
- Percebe que diferentes formatos de linguagem visual transmitem informações e favorecem o entendimento das informações pesquisadas.

Personal & Social Education

Learners understand that the physical changes they will experience at different stages in their lives affect their evolving identities. They understand that the values, beliefs and norms within society can impact on an individual's self-concept and self-worth. Learners understand that being emotionally aware helps them to manage relationships. They recognize and describe how a sense of self-efficacy contributes to human accomplishments and personal well-being. Learners apply and reflect on strategies that develop resilience and, in particular, help them to cope with change, challenge and adversity in their lives.

Educational Technology



Mrs. Shirley Hazell - College Principal
office@stfrancis.com.br

Mrs. Carolina Giannetto - Head of Early Years & Primary

Mrs. Vanessa Schachter - Assistant Head of Primary

All of Early Years & Primary - primary@stfrancis.com.br



ST. FRANCIS COLLEGE

St. Francis College
R. Joaquim Antunes, 678 - Pinheiros
CEP: 05415-001 São Paulo - SP - Brasil
Phone: +55 11 3728-8050

www.stfrancis.com.br stfranciscollegebrasil