



English Language

In PYP 6, pupils should be developing their understanding and enjoyment of stories, poetry, plays and non-fiction, and learning to read silently. They should also be developing their knowledge and skills in reading non-fiction about a wide range of subjects. They should be learning to justify their views about what they have read: with support at the start of PYP 6 and increasing independence by the end of PYP 6.

Pupils should be able to write down their ideas with a reasonable degree of accuracy and with good sentence punctuation. Teachers should therefore be consolidating pupils' writing skills, their vocabulary, their grasp of sentence structure and their knowledge of linguistic terminology. Pupils' spelling of common words should be correct, including common exception words and other words that they have learnt.

READING

- Secure decoding of unfamiliar words
- Read for a range of purposes
- Retell stories orally
- Discuss words & phrases that capture the imagination
- Identify themes & conventions
- Retrieve & record information
- Make inferences & justify predictions
- Recognise a variety of forms of poetry
- Identify & summarise ideas

WRITING

- Correctly spell common homophones
- Increase regularity of handwriting
- Plan writing based on familiar forms
- Organise writing into paragraphs
- Use simple organisational devices
- Proof-read for spelling & punctuation errors
- Evaluate own and others' writing
- Read own writing aloud

GRAMMAR

- Use wider range of conjunctions
- Use perfect tense appropriately
- Select pronouns and nouns for clarity
- Use & punctuate direct speech
- Use commas after front adverbials

SPEAKING & LISTENING

- Articulate & justify opinions
- Speak audibly in Standard English

Units of Inquiry

The IB Primary Years Program is a guided inquiry approach to learning and teaching. Inquiry-based units of study, known as Units of Inquiry, are the focus for learning and are integrated into various curriculum areas. Students experience what it is like to think and act like a historian, scientist, engineer or a mathematician. All of the Science and Social studies content is taught through the units of inquiry and is outlined below.

WHO WE ARE

Culture shapes one's identity.

LINES OF INQUIRY

- What culture is
- How culture shapes us
- Understanding others perspectives helps us shape our identity.

WHERE WE ARE IN PLACE AND TIME

Understanding earth's changes helps to interpret the past, present and future.

LINES OF INQUIRY

- The different ways the earth has looked through time
- The ways the earth changes
- How geological evidence is interpreted over time

HOW WE EXPRESS OURSELVES

The creative process helps us to think in new ways.

LINES OF INQUIRY

- What a process is/ the creative process
- Growth mindset
- The importance of feedback and analysis

HOW THE WORLD WORKS

Electricity affects the way we live.

LINES OF INQUIRY

- What electricity (energy) is
- How electricity (energy) works
- The different sources of electricity and their impact on society and the environment (technological advances)

HOW WE ORGANIZE OURSELVES

Settlements develop according to people's needs and opportunities.

LINES OF INQUIRY

- Origins and growth of settlements
- Interdependence within settlements
- Impact of settlements

SHARING THE PLANET

Creating and protecting human rights is a shared responsibility

LINES OF INQUIRY

- Human rights
- Equal opportunities and access to resources
- Responsibilities within a community

Mathematics

NUMBER/CALCULATION

- Know all tables to 12 x 12
- Secure place value to 1000
- Use negative whole numbers
- Round numbers to nearest 10, 100 or 1000
- Use Roman numerals to 100 (C)
- Column addition & subtraction up to 4 digits
- Multiply & divide mentally
- Use standard short multiplication

GEOMETRY/MEASURES

- Compare 2-D shapes, including quadrilaterals & triangles
- Find area by counting squares
- Calculate rectangle perimeters
- Estimate & calculate measures
- Identify acute, obtuse & right angles
- Identify symmetry
- Use first quadrant coordinates

DATA

- Use bar charts, pictograms & line graphs

COMPARE & SIMPLIFY FRACTIONS

- Recognise tenths & hundredths
- Identify equivalent fractions
- Add & subtract fractions with common denominators
- Recognise common equivalents
- Round decimals to whole numbers
- Solve money problems

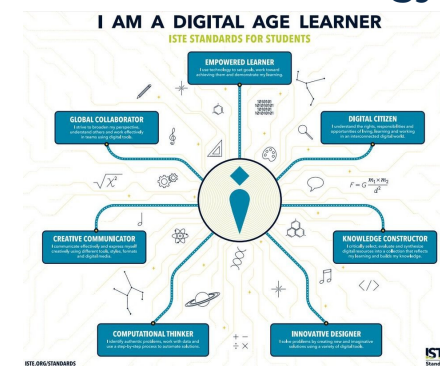
Portuguese

- Avalia a correção na grafia de palavras de uso frequente.
- Analisa informações visuais demonstrando compreensão, discutindo seus possíveis significados e formulando perguntas relevantes.
- Comenta textos.
- Identifica o que se aprendeu com o texto, articulando os novos conhecimentos ao que já se sabia.
- Articula o uso dos tempos verbais em textos diversos.
- Escreve empregando letras maiúsculas em substantivos próprios e em início de sentenças.

Personal & Social Education

Learners understand that a person's identity is shaped by a range of factors and that this identity evolves over time. They explore and reflect on the strategies they use to manage change, approach new challenges and overcome adversity. They analyse how they are connected to the wider community and are open to learning about others. Learners use their understanding of their own emotions to interact positively with others. They are aware that developing self-reliance and persisting with tasks independently will support their efforts to be more autonomous learners.

Educational Technology



Mrs. Shirley Hazell - College Principal
 office@stfrancis.com.br

Mrs. Carolina Giannetto - Head of Early Years & Primary

Mrs. Vanessa Schachter - Assistant Head of Primary

All of Early Years & Primary - primary@stfrancis.com.br



ST. FRANCIS COLLEGE



St. Francis College
 R. Joaquim Antunes, 678 - Pinheiros
 CEP: 05415-001 São Paulo - SP - Brasil
 Phone: +55 11 3728-8050